

WARM Wishes



mini quilt

Materials & Tools:

quilter's ruler, rotary cutter and cutting mat
coordinating cotton thread for piecing/quilting

white fabric	13" x 14"
grey fabric	4" x 15"
green fabric and/or wool	2 @ 8" x 11"
white/grey fabric scraps	14 @ 1 1/2" x 2 1/2"
red fabric scraps	28 @ 1 1/2" x 1 1/2"
fabric and/or wool for bird/berries/star	scraps
1 1/2" wide rick-rack	15" piece
Lite Steam-A-Seam 2	(1) 9" x 12" sheet
Fusible Warm Fleece2	18" x 20" piece
binding fabric (2 1/2" strips)	5" x width of fabric

© 2015 Sherri Noel, All Rights Reserved.

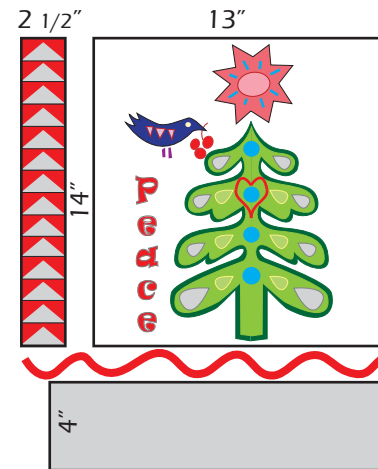
Notes:

Use fabric or a combination of fabric and wool for applique. Read entire pattern before beginning. Seams are 1/4" unless otherwise noted. For general instructions on finishing and binding visit i quiltmodern.com



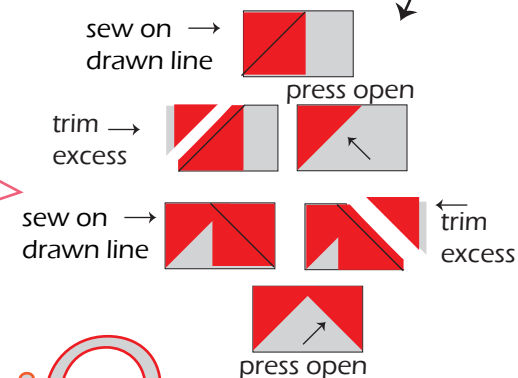
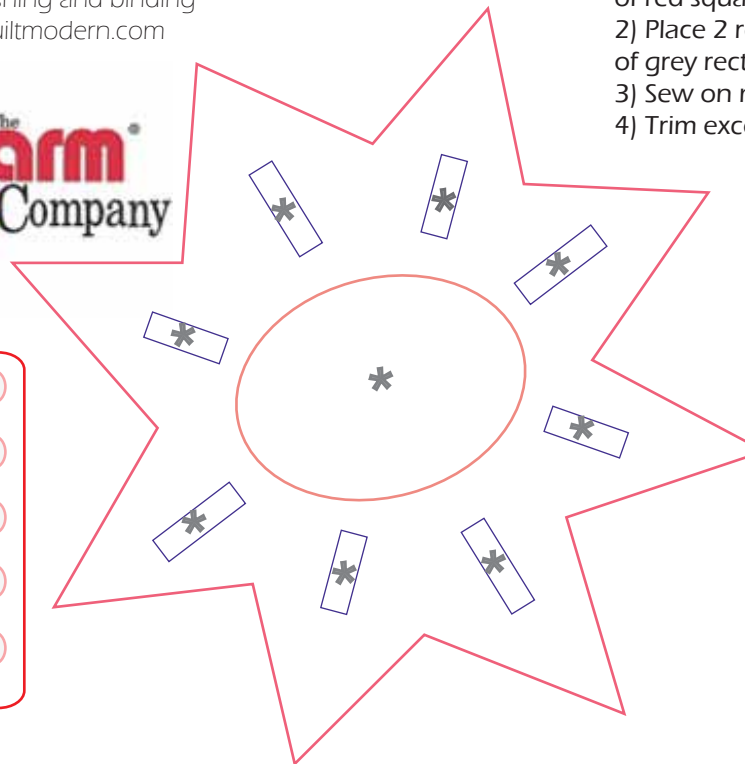
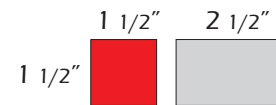
Assembly:

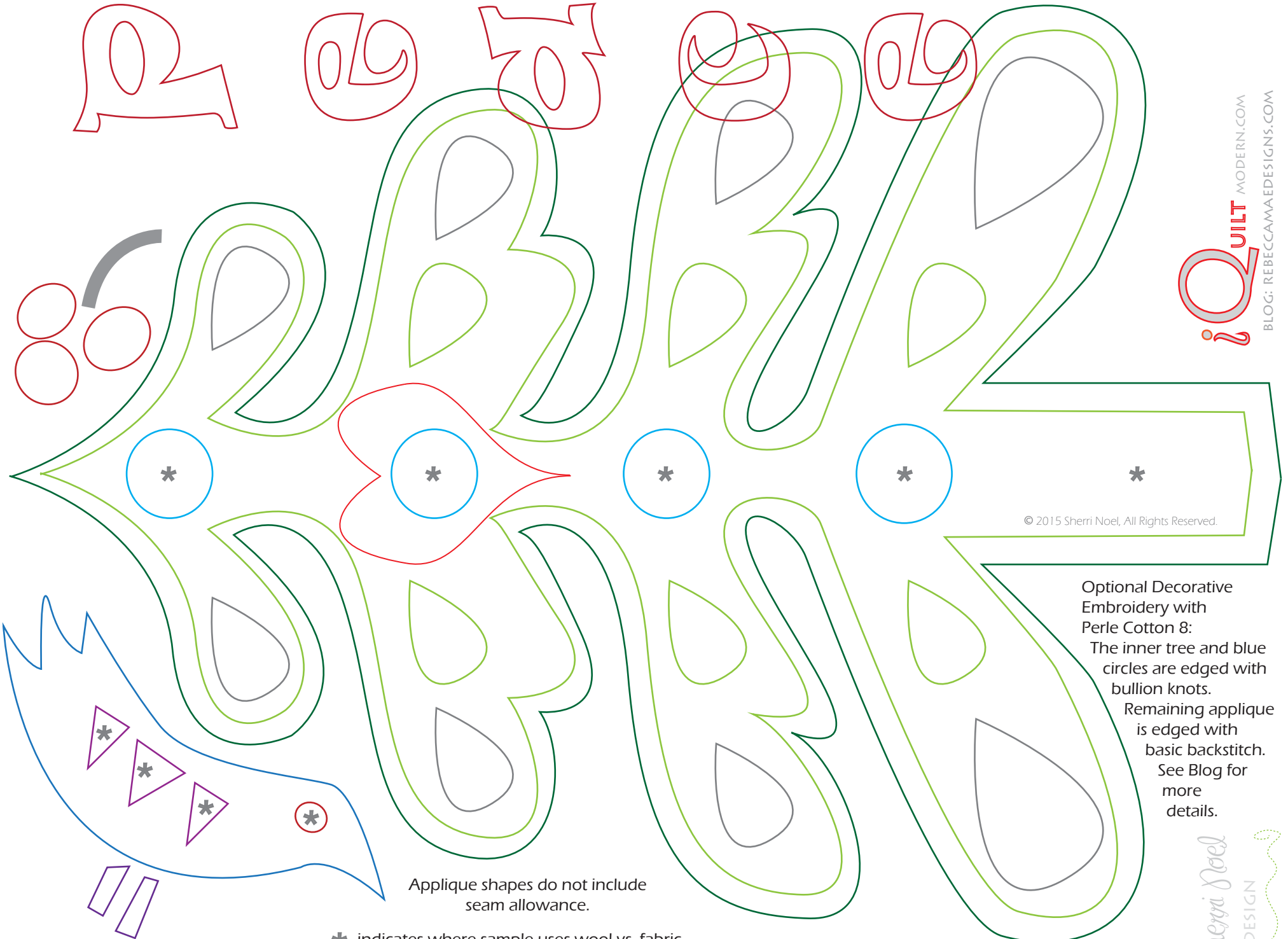
- 1) Using fabric or wool, applique shapes with Lite Steam-A-Seam onto 13" x 14" white background square.
- 2) Make 14 flying geese units following instructions below and join into 1 column.
- 3) Join column to left side of applique piece.
- 4) Sandwich rick-rack in between pieced unit from step 3 and grey 4" x 15" fabric (with right-sides together) and join.
- 5) Sandwich a piece of Warm Fusible Fleece2 between quilt top and backing (both right-sides out). Fuse together, quilt and bind.



For Flying Geese: Make 14

- 1) Mark a diagonal line on wrong side of red squares.
- 2) Place 2 red squares on opposite ends of grey rectangle, right sides together.
- 3) Sew on marked line.
- 4) Trim excess and press open.





© 2015 Sherri Noel, All Rights Reserved.

Optional Decorative Embroidery with Perle Cotton 8:
The inner tree and blue circles are edged with bullion knots.
Remaining applique is edged with basic backstitch.
See Blog for more details.

Applique shapes do not include seam allowance.

* indicates where sample uses wool vs. fabric.